



58 L/2
Bait El-Watan
New Cairo.



**58 L/2
Bait El-Watan
New Cairo.**

طريق القاهرة السويس



الطريق الدائري الاوسطي



ALMARASEM DEVELOPMENT



PALM HILLS DEVELOPMENTS



LA FONTAINE PROVINCE

PALM HILLS DEVELOPMENTS



LAYAN RESIDENCE



VILLETTE NEW CAIRO



citygate

PALM HILLS DEVELOPMENTS



Compound

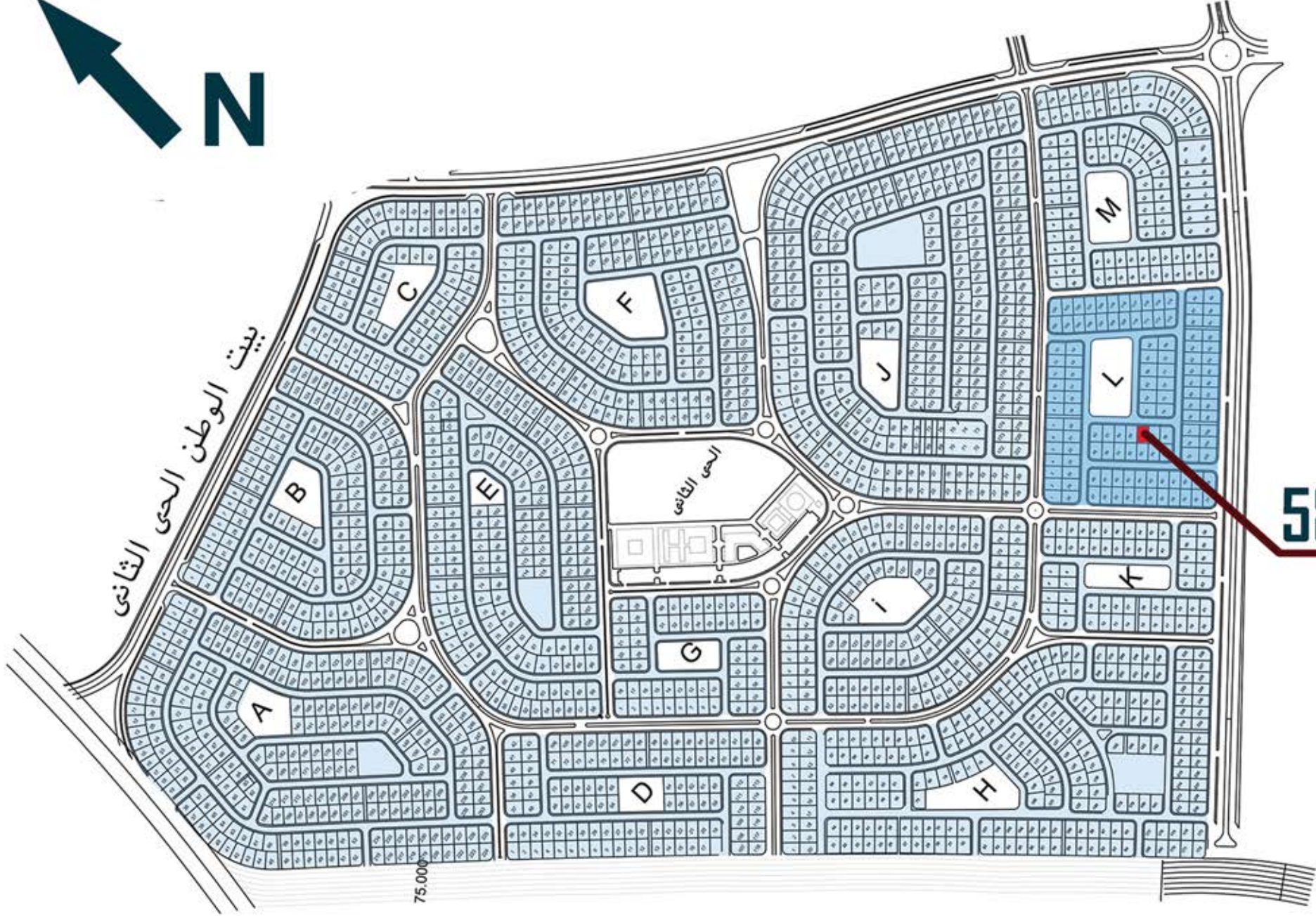
Compound

Compound

الطريق الدائري الاوسطي



العاصمة الإدارية الجديدة THE NEW CAPITAL



بييت الوطن الحى الثانى

الحى الثانى

58 L

75,000

1	2	3	4	5	6	7	8	9	10	11	12	13
26	25	24	23	22	21	20	19	18	17	16	15	14

27	28	29	30	31	32	33	34	35	36	37
48	47	46	45	44	43	42	41	40	39	38

49	50	51	52	53	54	55
62	61	60	59	58	57	56

Garden
L

63	64	65	66	67	68
74	73	72	71	70	69

75	76	77	78	79	80	81	82	83	84	85
102	101	100	99	98	97	96	95	94	93	92
86	87	88								
91	90	89								

103	104	105	106	107	108	109	110	111	112	113
124	123	122	121	120	119	118	117	116	115	114



Entrance





Apartments Details



Typical - Floor Plan

Typical - Type 01

Total Area 186 M² Closed



- ① Reception 3.60 x 8.60 M
- ② Toilet 1.10 x 2.30 M
- ③ Kitchen 2.80 x 3.00 M
- ④ Living Room 1.60 x 2.90 M

- ⑤ BedRoom 3.60 x 4.00 M
- ⑥ BedRoom 3.60 x 4.20 M
- ⑦ Master Bedroom 3.60 x 4.20 M
- ⑧ Bathroom 2.90 x 3.00 M

- ⑨ Bathroom 1.80 x 2.50 M
- ⑩ Terrace 1.50 x 2.60 M



Typical - Type 02

Total Area 187 M² Closed



❶ Reception	3.60 x 8.6 M	❺ BedRoom	3.60 x 4.00 M	❹ Bathroom	2.90 x 3.00 M
❷ Toilet	1.10 x 2.30 M	❻ BedRoom	3.60 x 4.20 M	❿ Terrace	1.50 x 2.60 M
❸ Kitchen	2.80 x 3.00 M	❼ Master Bedroom	3.60 x 4.20 M		
❹ Living Room	1.60 x 2.90 M	❽ Bathroom	1.80 x 2.50 M		



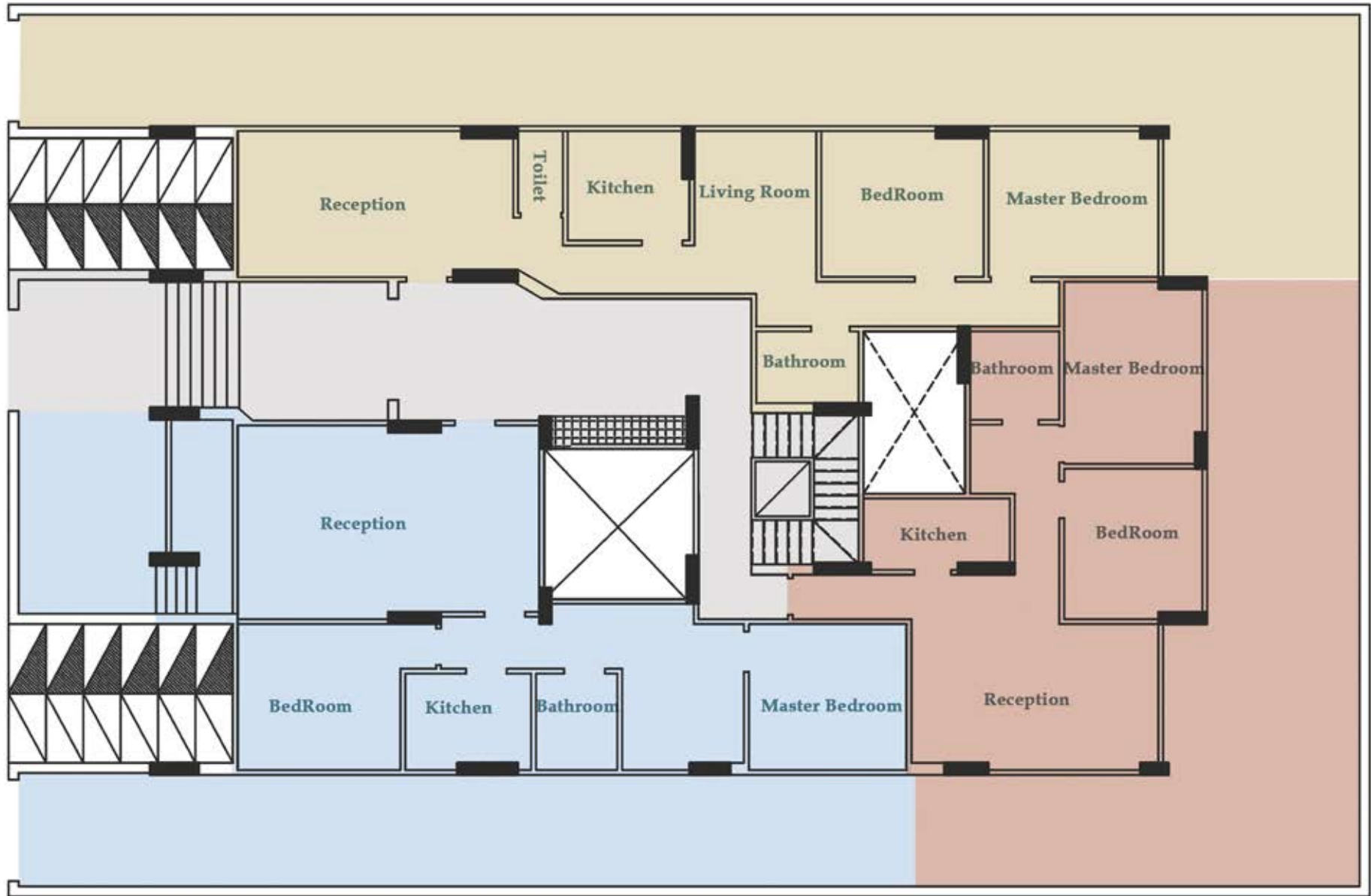
Typical - Type 03

Total Area 144 M² Closed



- | | | | | | |
|------------------|---------------|------------|---------------|-----------|---------------|
| ① Reception | 3.60 x 8.00 M | ④ BedRoom | 3.50 x 3.60 M | ⑦ Toilet | 1.00 x 1.60 M |
| ② BedRoom | 3.60 x 3.65 M | ⑤ Bathroom | 1.80 x 3.00 M | ⑧ Terrace | 1.30 x 3.10 M |
| ③ Master Bedroom | 3.40 x 3.70 M | ⑥ Kitchen | 2.30 x 2.60 M | | |





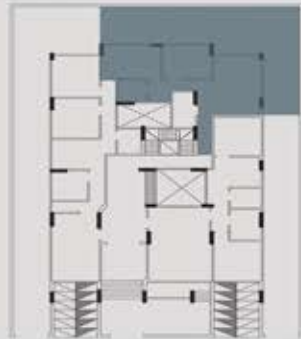
Ground - Floor

Ground - Type 01

Total Area 109 M² Closed
80 M² Garden



① Reception	3.60 x 6.00 M	④ Bathroom	2.20 x 2.20 M
② BedRoom	3.40 x 3.70 M	⑤ Kitchen	1.70 x 3.60 M
③ Master Bedroom	3.40 x 4.30 M	⑥ Garden	80 M ²



Ground - Type 02

Total Area 148 M² Closed
79 M² Garden



- | | | | | | |
|-------------|---------------|------------------|---------------|-----------|------------------|
| ① Reception | 4.80 x 7.50 M | ④ Bathroom | 2.00 x 2.40 M | ⑦ Terrace | 1.50 x 4.8 M |
| ② BedRoom | 3.60 x 4.00 M | ⑤ Living Room | 3.00 x 3.40 M | ⑧ Garden | 79M ² |
| ③ Kitchen | 2.40 x 3.10 M | ⑥ Master Bedroom | 3.60 x 3.90 M | | |



Ground - Type 03

Total Area 140 M² Closed
109 M² Garden



- | | | |
|----------------------------------|---------------------------------------|------------------------------------|
| 1 Reception 3.60 x 6.80 M | 4 Living Room 2.80 x 3.00 M | 7 Bathroom 1.80 x 2.50 M |
| 2 Toilet 1.10 x 2.00 M | 5 BedRoom 3.60 x 4.00 M | 8 Garden 109 M ² |
| 3 Kitchen 2.70 x 3.00 M | 6 Master Bedroom 3.60 x 4.20 M | |



Roof Plan

Total Area 94 M² Closed



❶ Reception 3.60 x 5.20 M

❷ Master Bedroom 3.60 x 4.20 M

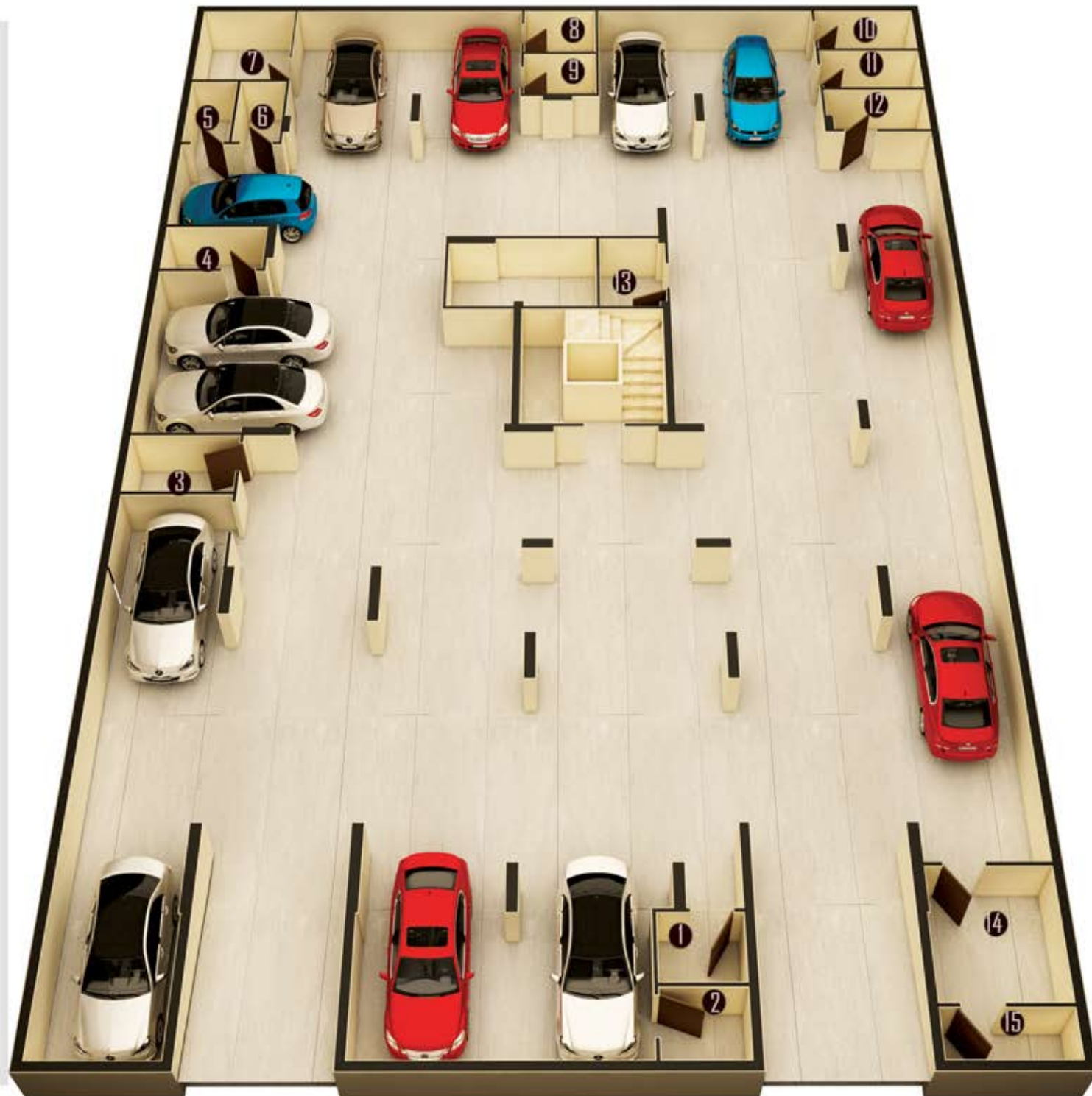
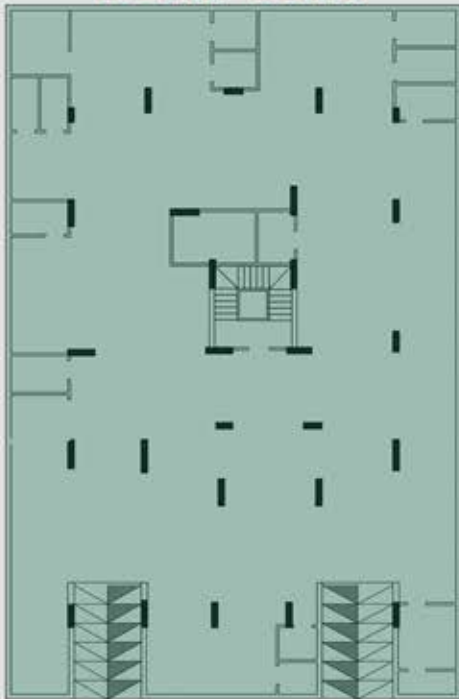
❸ BedRoom 3.40 x 4.10 M

❹ Kitchen 2.20 x 2.90 M

❺ Toilet 1.80 x 2.50 M

Basement Floor Parking

Occupancy
13 Cars.
13 Stores.
Gaurd Room .
Bathroom.



Characteristics of the project

- The design of the facades and entrance with the highest level and implementation of the finest materials.
- Every project unit has its own privacy with open spaces and green view.
- Design plans with internal spaces which give the best benefit and use.
- The flat slabs allow clients to modify the design in the future without restrictions (under the proper engineering supervision).
- • Security cameras.
 - Intercom.
 - Central satellite.
 - Elevators with the highest safety standards from garage to roof.
 - Alumital facade.
 - Parking area according to the Egyptian code and specifications and a large maneuvering area.



MODERN FACADE



SATELLITE



CAMERAS



PARKING



ELEVATOR



INTERCOM